




2024

East Coast Finals

SOLOS . DUOS . TRIOS

 **JULY 15TH - 18TH 2024**

 **GRAND HALL WOLLONGONG UNI**

 **0423 241 774**

 **ADMIN@EBSDN.COM**

 **WWW.EBSDN.COM**

Qualify

TO QUALIFY, YOU MUST PLACE 1ST, 2ND, 3RD, 4TH OR HC AT ANY EBSDN COMPETITION FROM 1/1/2023 TO 31/5/2024. YOU ONLY HAVE TO QUALIFY 1 ACT AND YOU CAN ENTER AS MANY ACTS AS YOU WOULD LIKE INTO FINALS. PLEASE NOTE, THESE RULES ARE FOR 2024 EAST COAST FINALS ONLY. 2025 WILL BE BASED ON SCORE AND ALSO INCLUDE TROUPE.

Age Rules

EBSDN AGE CUT OFF IS 01/01/2024 FOR ALL SOLOS, DUOS & TRIOS. DUOS & TRIOS AGE GROUP WILL BE TAKEN BY THE OLDEST DANCER.

SOLO & SINGING

AGE GROUPS

4 & UNDER

6 & UNDER

8 & UNDER

10 & UNDER

12 & UNDER

14 & UNDER

16 & UNDER

17 & OLDER

DUO & TRIO

AGE GROUPS

6 & UNDER

8 & UNDER

10 & UNDER

12 & UNDER

14 & UNDER

16 & UNDER

17 & OLDER



Time Limits

8 & UNDER - 2 MIN & 30 SEC

9 & OVER - 3 MINS

DUOS/TRIOS - 3 MINS

SINGING - 3 MINS

PERFORMERS EXCEEDING THE TIME LIMITS WILL HAVE 3 POINTS DEDUCTED BEFORE ADJUDICATION IS GIVEN. MUSIC WILL BE FADED AFTER THE 5 SECOND GRACE PERIOD.

PROPS HAVE A STRICT 45 SECOND SET UP/PACK UP TIME. PLEASE SEE PROPS SECTIONS FOR FURTHER INFORMATION.

Sections

Specially Restricted

THIS SECTION IS OPEN TO PERFORMERS WHO HAVE NEVER PLACED 1ST, 2ND OR 3RD IN SPECIALLY RESTRICTED AT ANY EISTEDDFOD, IN THAT PARTICULAR STYLE.

IF YOU HAVE PLACED 1ST IN SPECIALLY RESTRICTED WITH 3 OR MORE COMPETITORS IN THE SECTION, YOU MUST MOVE UP TO RESTRICTED.

OR

IF YOU HAVE PLACED 2ND OR 3RD IN SPECIALLY RESTRICTED WITH 5 OR MORE COMPETITORS IN THE SECTION YOU MUST ALSO MOVE UP TO RESTRICTED.

THIS SECTION QUALIFIES FOR SHOWCASE RUBY LEVEL.



Restricted

THIS SECTION IS OPEN TO PERFORMERS WHO HAVE NEVER PLACED 1ST IN A RESTRICTED SECTION IN THAT PARTICULAR STYLE, AT ANY EISTEDDFOD.

IF YOU HAVE PLACED 1ST IN A RESTRICTED SECTION WITH 3 OR MORE COMPETITORS YOU MUST MOVE TO UP TO OPEN LEVEL.

THIS SECTION QUALIFIES FOR SHOWCASE DIAMOND LEVEL.



Open

THIS SECTION IS OPEN TO ANY PERFORMER WHO HAS PLACED 1ST IN A RESTRICTED SECTION, AT ANY EISTEDDFOD, IN THAT PARTICULAR STYLE.

THE SECTION MUST HAVE HAD 3 OR MORE COMPETITORS TO MOVE UP TO OPEN.

IF YOU HAVE WON AN OPEN SECTION WITH 3 OR MORE COMPETITORS IN THE LAST 12 MONTHS, YOU MUST MOVE TO ELITE.

IF YOU TRAIN MORE THAN 16 HOURS A WEEK IN DANCE, PERFORMANCE, ACRO, CONDITIONING & TECHNIQUE COMBINED, YOU MUST ENTER ELITE IN ALL STYLES.

IF YOU ARE A DISTANCE EDUCATION STUDENT FOCUSING ON DANCE OR PERFORMANCE TRAINING (INCLUDING ENROLLED IN A DANCE SCHOOLS EDUCATION PROGRAM), YOU MUST ENTER ELITE IN ALL STYLES.

THIS SECTION QUALIFIES FOR SHOWCASE ELITE LEVEL.



Elite

IF YOU HAVE WON AN OPEN SECTION WITH 3 OR MORE COMPETITORS IN THE LAST 12 MONTHS AT ANY EISTEDDFOD, YOU MUST ENTER ELITE IN THAT PARTICULAR STYLE.

IF YOU TRAIN MORE THAN 16 HOURS A WEEK IN DANCE, PERFORMANCE, ACRO, CONDITIONING & TECHNIQUE COMBINED, YOU MUST ENTER ELITE IN ALL STYLES.

IF YOU ARE A DISTANCE EDUCATION STUDENT FOCUSING ON DANCE OR PERFORMANCE TRAINING (INCLUDING ENROLLED IN A DANCE SCHOOLS EDUCATION PROGRAM), YOU MUST ENTER ELITE IN ALL STYLES.

THIS SECTION QUALIFIES FOR SHOWCASE ELITE LEVEL.



EBSDN RESERVES THE RIGHT TO COMBINE SECTIONS IF ENTRIES DETERMINE LESS THAN 3 IN A SECTION. IF REQUIRED, WE WILL COMBINE SPECIALLY RESTRICTED/RESTRICTED & OPEN/ELITE.

Awards

1ST- EBSDN GLASS TROPHY

2ND- EBSDN GLASS TROPHY

3RD- EBSDN GLASS TROPHY

HIGHLY COMMENDED- EBSDN CUSTOM MEDAL

ENCOURAGEMENT- LARGE EBSDN RIBBON

TITLE SECTIONS - WINNER & RUNNER UP

CUSTOM EBSDN SASH, CERTIFICATE, TIARA & NEW TROPHY.

TOP 10 HIGHEST SCORING SPECIALLY RESTRICTED & RESTRICTED COMBINED

TOP 10 WILL BE ANNOUNCED IN NO PARTICULAR ORDER.

CERTIFICATE WILL BE PRESENTED ON THE DAY & PERFORMER WILL BE INVITED BACK TO OUR NOVICE CHAMPION OF CHAMPIONS ON TUESDAY 9TH JULY (MORNING SHOW). THEY WILL COMPETE FOR OUR OVERALL ELITE AGE CHAMPION & RUNNER UP. ALL OTHER TOP 10 PRIZES WILL BE AWARDED AT CHAMPION OF CHAMPIONS.

TOP 10 HIGHEST SCORING OPEN & ELITE COMBINED

TOP 10 WILL BE ANNOUNCED IN NO PARTICULAR ORDER.

CERTIFICATE WILL BE PRESENTED ON THE DAY & PERFORMER WILL BE INVITED BACK TO OUR ELITE CHAMPION OF CHAMPIONS ON TUESDAY 9TH JULY (AFTERNOON SHOW). THEY WILL COMPETE FOR OUR OVERALL ELITE AGE CHAMPION & RUNNER UP. ALL OTHER TOP 10 PRIZES WILL BE AWARDED AT CHAMPION OF CHAMPIONS.

SPONSOR PRIZES

WE HAVE SOME AMAZING SPONSORS COMING ONBOARD FOR OUR NATIONAL FINALS. THESE PRIZES WILL BE HANDED OUT FOR “WOW” MOMENTS DURING NATIONAL FINALS. IT COULD BE “TECHNICALLY TERRIFIC”, “TAP MACHINE”, “ON POINTE”, “CREATIVE COSTUME”, “SHOWMANSHIP”, “FACES FACES FACES” & MORE!



NOVICE CHAMPION CHAMPIONS

TOP 10 HIGHEST SCORING SPECIALLY RESTRICTED & RESTRICTED PERFORMERS

WILL BE INVITED BACK TO OUR NOVICE CHAMPION OF CHAMPIONS SHOWCASE.

EACH PERFORMER WILL PERFORM THEIR HIGHEST SCORING ROUTINE FOR THEIR

CHANCE TO WIN SOME EPIC PRIZES AND BE CROWNED OUR NOVICE EAST COAST FINALS AGE CHAMPION.

LARGE
UNIQUE
TROPHIES

TIARA &
SCEPTER

CUSTOM
SASHES

STAGE
VIDEOS

OVERALL
AGE
CHAMP

RUNNER
UP
PRIZES

SPONSOR
PRIZES

YOU MUST ADVISE US THE DAY YOU QUALIFY IF YOU ARE RETURNING FOR CHAMPION OF CHAMPIONS. THERE IS NO EXTRA FEE FOR THIS EVENT. YOU MUST PERFORM YOUR HIGHEST SCORING ROUTINE.

Novice Champion of Champion Prizes

NOVICE AGE CHAMPION

EXTRA LARGE EBSDN CUSTOM GLASS TROPHY, LARGE TIARA, SCEPTER, CUSTOM SASH, VIDEO OF CHAMPIONS WINNING ROUTINE & PHOTOS FROM CHAMPION ROUTINE FROM TRENT MULLIGAN PHOTOGRAPHY.

NOVICE RUNNER UP AGE CHAMPION

LARGE EBSDN CUSTOM GLASS TROPHY, TIARA, CUSTOM SASH, VIDEO OF CHAMPIONS WINNING ROUTINE & PHOTOS FROM CHAMPION ROUTINE FROM TRENT MULLIGAN PHOTOGRAPHY.

NOVICE 3RD TO 10TH CHAMPIONS

CUSTOM SASH, MEDAL & VIDEO OF CHAMPIONS DANCE.

SPECIAL PRIZES

ALL PERFORMERS REGARDLESS OF PLACING WILL EARN A SPECIAL “I PERFORMED AT EBSDN NATIONAL FINALS” SPECIAL PRIZE. PLEASE NOTE: THIS PRIZE WILL BE CATERED TO THE AGE GROUP AND SOME AGE GROUPS MAY BE DIFFERENT.

SPONSOR PRIZES

WE HAVE SOME AMAZING SPONSORS COMING ONBOARD FOR OUR NATIONAL FINALS AND THESE PRIZES WILL BE HANDED OUT FOR “WOW” MOMENTS DURING NATIONAL FINALS. IT COULD BE “TECHNICALLY TERRIFIC”, “TAP MACHINE”, “ON POINTE”, “CREATIVE COSTUME”, “SHOWMANSHIP”, “FACES FACES FACES” & MORE!



ELITE CHAMPION CHAMPIONS

TOP 10 HIGHEST SCORING OPEN & ELITE PERFORMERS

WILL BE INVITED BACK TO OUR ELITE CHAMPION OF CHAMPIONS SHOWCASE.

EACH PERFORMER WILL PERFORM THEIR HIGHEST SCORING ROUTINE FOR THEIR

CHANCE TO WIN SOME EPIC PRIZES AND BE CROWNED OUR ELITE EAST COAST FINALS AGE CHAMPION.

LARGE
UNIQUE
TROPHIES

TIARA,
SCEPTER
& SASH

CASH
PRIZES

STAGE
VIDEOS

OVERALL
AGE
CHAMP

RUNNER
UP
PRIZES

SPONSOR
PRIZES

YOU MUST ADVISE US THE DAY YOU QUALIFY IF YOU ARE RETURNING FOR CHAMPION OF CHAMPIONS. THERE IS NO EXTRA FEE FOR THIS EVENT. YOU MUST PERFORM YOUR HIGHEST SCORING ROUTINE.

Elite Champion of Champion Prizes

ELITE AGE CHAMPION

EXTRA LARGE EBSDN CUSTOM GLASS TROPHY, LARGE TIARA, SCEPTER, CUSTOM SASH, VIDEO OF CHAMPIONS WINNING ROUTINE, PHOTOS FROM CHAMPION ROUTINE FROM TRENT MULLIGAN PHOTOGRAPHY, \$100 CASH.

ELITE RUNNER UP AGE CHAMPION

LARGE EBSDN CUSTOM GLASS TROPHY, TIARA, CUSTOM SASH, VIDEO OF CHAMPIONS WINNING ROUTINE, PHOTOS FROM CHAMPION ROUTINE FROM TRENT MULLIGAN PHOTOGRAPHY.

ELITE 3RD TO 10TH

CUSTOM SASH, MEDAL & VIDEO OF CHAMPIONS DANCE.

SPECIAL PRIZES

ALL PERFORMERS REGARDLESS OF PLACING, WILL EARN A SPECIAL "I PERFORMED AT EBSDN NATIONAL FINALS" SPECIAL PRIZE. PLEASE NOTE: THIS PRIZE WILL BE CATERED TO THE AGE GROUP AND SOME AGE GROUPS MAY BE DIFFERENT.

SPONSOR PRIZES

WE HAVE SOME AMAZING SPONSORS COMING ONBOARD FOR OUR NATIONAL FINALS AND THESE PRIZES WILL BE HANDED OUT FOR "WOW" MOMENTS DURING NATIONAL FINALS. IT COULD BE "TECHNICALLY TERRIFIC", "TAP MACHINE", "ON POINTE", "CREATIVE COSTUME", "SHOWMANSHIP", "FACES FACES FACES" & MORE!

Entry Fees

- SOLOS- \$60 PER ROUTINE**
- SINGING- \$60 PER ROUTINE**
- DUOS/TRIOS- \$70 PER ROUTINE**
- TITLE SECTIONS- \$65 PER ROUTINE**
- CHAMPION OF CHAMPIONS- FREE**

PAYPAL CAN BE SELECTED WHEN ENTERING ONLINE. ONCE YOU SUBMIT YOUR ENTRIES, WE WILL SEND YOU LINK TO PAY VIA PAYPAL. PLEASE NOTE: IF YOUR FEES ARE NOT PAID, YOUR ENTRIES WILL NOT BE PROGRAMMED. ALL MONIES PAID WILL BE FORFEITED. NO REFUNDS WILL BE GIVEN FOR CHANGE OF MIND (PART PAYMENT OR OTHERWISE).

ENTRIES WILL CLOSE WITH THE COMPETITION IS FULL. IF YOU ARE LOOKING TO ENTER, WE RECOMMEND YOU DO THIS ASAP TO AVOID MISSING OUT. WE DO NOT OFFER WAITLISTS.

Door Fees

PRE-PURCHASED VIA TRY BOOKING

ADULT (SATURDAY - MONDAY)

1 SESSION \$25

ALL DAY \$35

CHILD (SATURDAY - MONDAY)

1 SESSION \$15

ALL DAY \$25

CHAMPION OF CHAMPIONS (TUESDAY)

ADULT 1 SHOW ONLY \$30

CHILD 1 SHOW ONLY \$15



**ALL TICKETS ARE \$5 EXTRA IF PURCHASED AT THE DOOR
NO TEACHER PASSES AVAILABLE**

Styles

YOU MAY ONLY ENTER EACH STYLE ONCE. A PERFORMER CAN NEVER HAVE MORE THAN ONE ROUTINE IN THE SAME SECTION, UNLESS EBSDN HAS COMBINED A SECTION DUE TO LACK OF ENTIRES. YOU MAY NOT REPEAT ANY ROUTINES IN MULTIPLE SECTIONS, INCLUDING OWN CHOICE. CHAMPION OF CHAMPION TOP 10 FINALS WILL BE A REPEAT ROUTINE AS YOU MUST PERFORM YOUR HIGHEST SCORING ROUTINE. YOU CANNOT QUALIFY FOR BOTH ELITE CHAMPIONS AND NOVICE CHAMPIONS, YOU MUST ENTER THE HIGHEST QUALIFIED.

JAZZ- A ROUTINE USING JAZZ TECHNIQUE, WITH SUCH MOVES AS KICKS SPLITS, ISOLATIONS ETC. CANNOT CONTAIN ANY MORE THAN 8 ACRO TRICKS. ACRO TRICKS DO NOT SUBSTITUTE FOR TECHNIQUE OR CHOREOGRAPHY. TECHNIQUE MUST RELATE TO THE ROUTINES JAZZ ELEMENT AND NOT JUST BE THERE TO FILL IN THE GAPS.

FAST TAP- UPBEAT TEMPO MUSIC SHOWCASING TAP ELEMENTS.

SLOW TAP- SLOW TEMPO MUSIC SHOWCASING TAP ELEMENTS.

HIP HOP- A ROUTINE THAT UTILISES HIP HOP/STREET STYLE MOVEMENTS.

BROADWAY JAZZ- A JAZZ ROUTINE THAT IS DYNAMIC, WITH AN ENTERTAINING CONCEPT OR A GIMMICK. SONG CAN BE FROM THEATRE, FILM OR MUSICAL. ANY TYPE OF SHOES INCLUDING CHORUS HEELS ARE WELCOME TO GIVE IT THE SHOW LOOK. NO MORE THAN 4 ACRO TRICKS PERMITTED.

MUSICAL THEATRE- A PRESENTATION FROM A STAGE OR FILM MUSICAL. IT CAN INCLUDE SINGING, DIALOGUE, ACTING AND DANCE. BACKING VOCALS PERMITTED.

LYRICAL- ALSO KNOWN AS MODERN EXPRESSIVE. SLOW CONTROLLED BALLET MOVEMENTS, SET TO SLOW MUSIC OR BALLAD. ROUTINE MUST DEMONSTRATE BALANCE, FLEXIBILITY AND CONTROL UTILISING THE LYRICS OR MOOD OF THE SONG.

TRADITIONAL CONTEMPORARY- INTERPRETIVE DANCE USING BALANCE AND CONTROL. MUST BE OF CONTEMPORARY STYLE- ANGULAR AND ABSTRACT MOVEMENTS, FREE FLOWING AND RELAXED ABOUT THE BODIES NATURAL LINE & ENERGY, THE STYLE COULD BE TO ANY TYPE OF MUSIC AND TEMPO.

COMMERCIAL CONTEMPORARY- ANY MIX OF STYLES THAT HAS FREEDOM OF MOVEMENT, FLOOR WORK, OFF BALANCE MOVES, JAZZ AND GYMNASTIC ELEMENTS. EXECUTION OF STRONG SHAPES, VERY MUSICAL AND STORY DRIVEN.

CLASSICAL BALLET- ROUTINE MUST INCLUDE CLASSICAL STEPS AND BALLET TECHNIQUE. FLAT BALLET OR POINTE SHOES MUST BE WORN.

DEMI CHARACTER- BASED ON CLASSICAL BALLET TECHNIQUE, THE PORTRAYAL OF A STORYLINE MUST BE STRONG AND EQUAL TO THE DANCE.

STUDENT CHOREOGRAPHY- MUST BE 100% STUDENT PRODUCED ANY STYLE, NO TEACHER ASSISTANCE.

OWN CHOICE- THIS SECTION IS OPEN TO ALL STYLES / GENRES AND ACTS THAT DO NOT TYPICALLY FIT INTO ANY OTHER CATEGORIES. (ACRO, POP AND LOCK, BREAK DANCE, SONG & DANCE ETC). YOU MAY PERFORM ANY STYLE OF DANCE, BUT CANNOT REPEAT A DANCE PERFORMED IN ANOTHER CATEGORY. NO LIMIT ON THE NUMBER OF ACRO TRICKS.

Program

EBSDN WILL EMAIL OUT A LIVE DRAFT VERSION OF THE PROGRAM A MINIMUM OF 4 WEEKS PRIOR TO THE COMMENCEMENT OF THE EISTEDDFOD. WHILE THE PROGRAM IS IN DRAFT MODE, YOU CAN EMAIL US TO ADVISE OF ANY CHANGES. ADMIN@EBSDN.COM

WHEN EMAILING PROGRAM CHANGES, YOU MUST INCLUDE THE FOLLOWING INFORMATION:

- PERFORMERS NAME
- SECTION NUMBER
- CHANGES TO BE MADE - INCLUDING ANY SECTION NUMBERS THE ACT IS MOVING TOO

YOU WILL BE ABLE TO SEE ALL CHANGES LIVE ON THE DRAFT PROGRAM. THE PROGRAM WILL THEN MOVE TO A FINAL VERSION A MINIMUM OF 2 WEEKS PRIOR TO THE EVENT. ONCE THE PROGRAM IS IN "FINAL VERSION", NO FURTHER CHANGES CAN BE MADE.

PLEASE DO NOT PRINT THE PROGRAM UNTIL AFTER MUSIC UPLOADS HAS BEEN CLOSED FOR 48 HOURS, WE WILL REMOVE ANY ACTS WHERE MUSIC HAS NOT BEEN UPLOADED AND RECHECK TIMING. TIMING IN THE PROGRAM IS APPROX ONLY AND WE WILL NEVER RUN MORE THAN 45MINS EARLY.

Music

EBSDN USES MUSIC UPLOADS FOR ALL MUSIC UPLOADS, VOICE CRITIQUE, SCORES & VIDEOS.

ALL MUSIC MUST BE UPLOADED A MINIMUM OF 12 DAYS PRIOR TO THE FIRST DAY OF THE COMPETITION. ANY MUSIC NOT UPLOADED IN THIS TIME FRAME WILL BE TAKEN AS THE PERFORMER IS NO LONGER DANCING. THE ROUTINE WILL BE REMOVED FROM THE PROGRAM.

IF YOU MISS THE MUSIC CUT OFF DATE AND STILL WISH TO PERFORM, YOU WILL BE CHARGED A ONE OFF FEE OF \$25 PER ROUTINE FOR US TO REOPEN MUSIC UPLOADS SO YOU CAN UPLOAD YOUR MUSIC. PLEASE NOTE: UNDER NO CIRCUMSTANCES WILL WE ACCEPT A USB, DISC, PHONE OR IPOD FOR MUSIC. MUSIC UPLOADS IS THE ONLY WAY TO SUBMIT MUSIC TO EBSDN.

IT IS THE RESPONSIBILITY OF THE PARENT/GUARDIAN TO ENSURE THE CORRECT MUSIC HAS BEEN UPLOADED AND CHECKED. UNDER NO CIRCUMSTANCES CAN A STUDIO OR TEACHERS ACCOUNT BE USED TO UPLOAD MUSIC FOR SOLOS, DUOS & TRIOS. EBSDN WILL NOT TAKE RESPONSIBLY FOR INCORRECT MUSIC UPLOADED OR MUSIC THAT EXCEEDS THE TIME LIMITS. WWW.MUSICUPLOADS.COM.AU

Videos & Photos

UNDER NO CIRCUMSTANCES MAY ANY AUDIENCE MEMBER FILM OR PHOTOGRAPH ANY ROUTINE. HERE AT EBSDN, WE TAKE CHILD PROTECTION SERIOUSLY. ANYONE CAUGHT FILMING OR TAKING PHOTOS WILL BE REMOVED FROM THE VENUE, THE RECORDING WILL BE DELETED AND THE CHILD WILL BE DISQUALIFIED FROM THAT SECTION.

WE WILL HAVE A PROFESSIONAL VIDEOGRAPHER & PHOTOGRAPHER ON SITE. IF YOU WOULD LIKE TO ORDER PHOTOS OR VIDEOS, PLEASE VISIT THE FRONT DESK PRIOR TO YOUR PERFORMANCE AND OUR SUPPORT TEAM WILL BE ABLE TO HELP YOU.

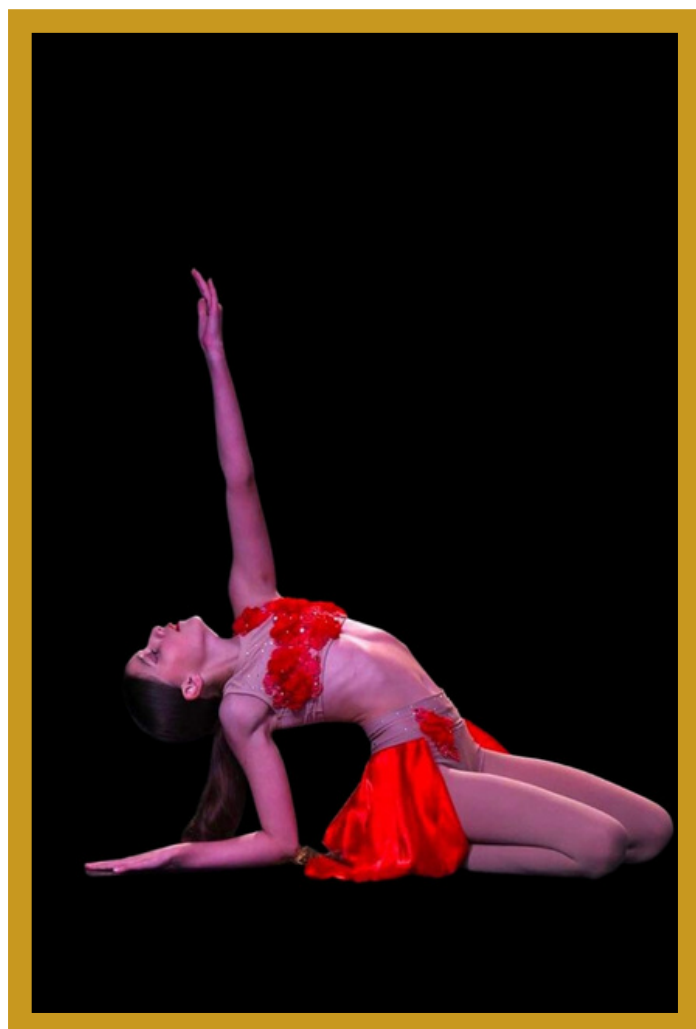
Adjudicator

AT EBSDN, WE ARE PROUD TO HAVE SOME OF THE BEST ADJUSTORS IN THE INDUSTRY. ALL ADJUDICATORS WILL BE ANNOUNCED PRIOR TO THE FINALISED PROGRAM. IF AN ADJUDICATOR IS UNABLE TO PERFORM HIS/HER DUTIES, EBSDN RESERVES THE RIGHT TO APPOINT A NEW JUDGE WITHOUT NOTICE. THE ADJUDICATOR'S DECISION IS FINAL. EBSDN IS A FAMILY FRIENDLY EVENT AND WE DO NOT OFFER A PROTEST SYSTEM.

ALL VOICE CRITIQUES & SCORES WILL BE AVAILABLE ON MUSIC UPLOADS WITHIN 3 BUSINESS DAYS OF THE EVENT.

WHERE A PERFORMER HAS A PERSONAL OR PROFESSIONAL RELATIONSHIP WITH THE ADJUDICATOR (INCLUDING FAMILY RELATION AND/OR TEACHER IN THE LAST 6 MONTHS), THEY WILL BE MARKED FOR CRITIQUE ONLY. THEY WILL NOT BE ELIGIBLE FOR PLACES, DUE TO CONFLICT OF INTEREST.

CHAMPION OF CHAMPIONS WILL HAVE 2 NEW ADJUDICATORS WHO HAVE NOT ADJUDICATED DURING THE WEEK.



Props

PROPS CAN BE USED, HOWEVER, IT IS THE ENTRANT'S RESPONSIBILITY TO PLACE THEM IN THE ALLOCATED PROP AREA, LABEL THEM CORRECTLY AND BRING THEM ON/OFF STAGE THROUGHOUT THE COMPETITION.

- **SAFETY IS PARAMOUNT IN THE USE OF PROPS.**
- **PROPS MUST BE BUILT OFF STAGE, CARRIED, NOT DRAGGED ONTO THE STAGE.**
- **EBSDN DOES NOT TAKE RESPONSIBILITY FOR ANY INJURIES CAUSED BY THE USE OF PROPS.**
- **ANY PROPS LEFT OVER AT THE CONCLUSION OF THE EVENT, WILL BE PLACED IN THE BIN.**
- **FREE STANDING PROPS WITH A 45 SECOND TIME ALLOWANCE FOR PREPARATION IS PERMITTED.**
- **ALL PROPS MUST BE REMOVED IMMEDIATELY AFTER THE PERFORMER HAS FINISHED THE ROUTINE.**
- **ANY FEATHERS ETC ON A STAGE AFTER THE PERFORMANCE MUST BE CLEANED UP IMMEDIATELY IN THE 45 SECOND TIME ALLOCATION.**

STRICTLY NO POWDER. ROSIN. GLITTER. CONFETTI. WATER. MIRRORS. TAP COVERS MUST BE WORN AT ALL TIMES UNLESS ON STAGE.



Scoring

EBSDN SCORING SYSTEM

TECHNIQUE - 30

CHOREOGRAPHY/CREATIVITY - 20

COSTUME - 10

EXECUTION/PRECISION - 10

OVERALL PERFORMANCE & STAGE PRESENCE - 30

TOTAL - 100



POINT DEDUCTIONS

Please note EBSDN has the following Point Deduction system in place. These points will be deducted from the overall score.

- **OVER TIME LIMIT -3 POINTS (5 second grace period allowed)**
- **INAPPROPRIATE COSTUMES -3 POINTS (See Below)**
- **PROPS -3 POINTS (See Below)**
- **PHOTOGRAPHY OR FILMING -5 POINTS (See Below)**

INAPPROPRIATE COSTUMES

- **Not Age Appropriate**
- **Too Revealing**
- **Unsafe**
- **One Shoe**
- **No Shoes in Jazz, Tap, Ballet or Hip Hop**

PROPS

- **Use of unsafe props or props that damage the floor including rosin**
- **Props that take longer than 45 sec to set up or clear the stage**

PHOTOGRAPHY OR FILMING

- **Any audience member caught filming or taking photos on the first warning will incur a 5 point deduction for the performer, there will be no 2nd warning. If this happens a second time, the performer will be disqualified and the person filming or taking photos will be removed from the venue.**

Day of Competition

- **ALL PERFORMERS ARE EXPECTED TO ARRIVE A MINIMUM OF ONE HOUR PRIOR TO PERFORMANCE TIME. EBSDN IS KNOWN TO RUN ON TIME AND SOMETIMES EARLY. WE RESERVE THE RIGHT TO START A SECTION EARLY. A SECTION WILL NEVER START MORE THAN 45 MINUTES EARLIER THAN THE ADVERTISED TIME IN THE FINAL PROGRAM.**
- **KEEP UP TO DATE WITH OUR LIVE PROGRAM WHICH IS SHARED ON THE EBSDN FACEBOOK GROUP.**
- **ALL ENTRIES ARE EXPECTED TO PERFORM AT THEIR SCHEDULED DAY/TIME. EBSDN RESERVE THE RIGHT TO ALLOW A PERFORMER TO PERFORM OUT OF ORDER IN A SITUATION WHERE THEY HAVE LESS THAN 5 ACTS TO GET CHANGED.**
- **PERFORMERS IN OPEN SECTIONS FROM 9YRS AND OVER CANNOT REPEAT THEIR DANCE AFTER FORGETTING IT, THEY WILL BE JUDGED ON WHAT THEY HAVE PERFORMED.**
- **REPEATS WILL BE ALLOWABLE FOR YOUNGER AGE GROUPS AT THE DISCRETION OF THE ADJUDICATOR.**
- **REPEATS IN RESTRICTED SECTIONS FOR PERFORMERS AGE 8 AND UNDER AFTER BREAKDOWN, WILL BE ABLE TO REPEAT THEIR PERFORMANCE FOR THE ADJUDICATOR AND MARKED ON SUCH AN ATTEMPT.**
- **ALL PERFORMERS ARE EXPECTED TO BE PRESENT FOR AWARDS AND ADJUDICATION. IF YOU ARE UNABLE TO BE PRESENT, PLEASE ARRANGE FOR SOMEONE TO COLLECT THESE ON YOUR BEHALF.**
- **ONCE A PERFORMER HAS RECEIVED AN AWARD, WE ASK FOR THEM TO JOIN US ON STAGE FOR A BIG GROUP PHOTO. PLEASE ENSURE THEY ARE WEARING THEIR STUDIO JACKETS AT THIS TIME SO THEY CAN REPRESENT THEIR STUDIO WITH PRIDE.**
- **THE AWARDS TABLE CAN GET QUITE BUSY DURING THIS TIME. IF YOU BELIEVE YOUR PERFORMER MAY HAVE PICKED UP THE INCORRECT AWARD BY ACCIDENT, PLEASE COME AND SEE THE AWARDS TABLE BEFORE YOU LEAVE AND WE WILL FIX IT UP FOR YOU.**

Refunds

EBSDN COMPETITIONS ARE PREPARED MONTHS IN ADVANCE. WE PAY OUT FOR ALL PRIZES, VENUE, INSURANCES, STAFF, TRAVEL AND ACCOMMODATION, FLOORING AND ADJUDICATORS. YOUR ENTRIES INTO OUR COMPETITIONS, WHICH ARE PLACED MONTHS BEFORE, ARE USED TO PAY FOR ALL THE OUTGOINGS ABOVE.

EBSDN (EVERYBODY SING AND DANCE NOW), DOES RESERVE THE RIGHT TO CHANGE COMPETITION DAYS OR MOVE THE LOCATION DUE TO UNFORESEEN CIRCUMSTANCES OR ACTS OF GOD AND ENTRIES WILL NOT BE REFUNDED.

PERFORMERS ARE NOT ENTITLED TO ANY REFUND OR TRANSFER OF FEES IN CASE OF NON APPEARANCE IN ANY SECTION. IF YOU OR YOUR PERFORMER DECIDES THAT THEY DO NOT WANT TO PERFORM ANYMORE, THERE IS NO REFUND OR TRANSFER. WE DO NOT PROVIDE REFUNDS FOR CHANGE OF MIND, CLASH WITH ANOTHER COMMITMENT OR THE PERFORMER DECIDES THEY DO NOT WANT TO PARTAKE IN COMPETITIONS, ANYMORE.



Terms & Conditions

- 1. We ask that, if you are showing any signs of COVID-19 - fever, above 37.5 degrees, raspy cough, sore throat, fatigue, shortness of breath we ask you to please stay at home. We request that you DO NOT attend if you are meant to be in isolation at the time of the competition.**
- 2. All performers are expected to arrive a minimum of one hour prior to performance time. EBSDN is known to run on time and sometimes early. We reserve the rights to start a section early. A section will never start more than 45minutes earlier than the advertised time in the final program.**
- 3. On entry, you give your consent for EBSDN to use and retain the name and image of your child for the purposes of public relations, media and promotion in print or through the EBSDN Facebook page and website. This consent remains in place for 3 years.**
- 4. Not all venues have the facilities for icepacks. Each performer and Studio MUST provide their own first aid person, ice, and first aid kit. EBSDN volunteers and staff are not responsible for providing any first aid equipment or ice/heat products.**
- 5. If a student has left a dance studio, please ensure you have permission from past choreographers/teachers to be able to continue to perform routines who's ownership may be in question at any competition.**
- 6. Please understand that disputes in regard to this must be mediated and handled with class. Social media is not an appropriate platform to discuss these matters, or the event itself by the parties involved. Failure to gain permission will see disqualification for all parties involved. If on social media Everybody Sing and Dance Now is named for allowing a routine to go on stage, EBSDN will impose a ban to any EBSDN competition, for two years. EBSDN will not get involved in this, we simply ask that you all do the right thing.**
- 7. All music, lyrics and dance moves MUST be age appropriate! Failure to comply will result in disqualification. Time limits are the maximum allowed and will be counted from the moment the music or dialogue begins. If performers go over this, you will receive a 5 point deduction.**
- 8. Due to Copyright and any State or Federal laws – all dancers and vocalists must have the permission of the choreographing teacher to perform routines and have permission to use all music. In accordance with federal statutes, performers must use original material or have permission from the relevant owners of copyright.**
- 9. Participating in sport or dance competitions can be rigorous and result in injury. They can include, but not limited to: sprains, bruises, pulled muscles, and broken bones. Participation in EBSDN indicates the acceptance of such risks by performers and troupes. Therefore, by virtue of entering this event, it is agreed that participants will not hold EBSDN or its officers, directors, staff, volunteers responsible for any sustained injuries sustained or illness contracted by them while in attendance and /or participating in any activity related to EBSDN. EBSDN and the hosting venues are not responsible for personal injury to contestants, spectators, or staff.**
- 10. Due to EBSDN being a public event, we encourage all attendees to always supervise children. It is advisable that if you have a child under 13yrs of age, an adult should please go to the toilet with them. Please be responsible for YOUR personal belongings. Please be aware of surroundings and inform an EBSDN staff member of unsuitable or suspicious activity.**
- 11. Bullying or intimidation at an EBSDN competition is not acceptable and any evidence of such, will result in instant dismissal from the competition. Sportsmanship behaviour is always expected. Failure to display proper decorum could result in immediate disqualification. This includes attempting to recruit students from other studios to attend your studio. This is NOT acceptable!**
- 12. All performers are to change in the allocated changing rooms ONLY. Please remember to respect each other's space and personal belongings. Please ensure all dressing rooms are tidy at the end of the day. Any entrant found to have caused damage to the dressing room will be charged the relevant repair costs. If you happen to find existing damage in a dressing room, please notify staff immediately. The Venue and EBSDN Team will take photos of each dressing room as they stand each morning.**
- 13. All attendees, including but not limited to, Dancers, Singers, Parents/Caregivers, Teachers, Directors, Volunteers and Patrons, indemnify and keep indemnified Everybody Sing and Dance Now (EBSDN) and its committee members and operators on both a commercial and personal basis against all actions, suits, proceedings, claims, demands, costs, and expenses whatsoever which may be made against the registered EBSDN and or its volunteer members in carrying out the duties and requirements in terms of the event and these rules.**